



NUGGETS

- **October 15, 1904**
One of the largest gold nuggets ever found in Colorado was recently picked up at the Snowstorm placer, in Park county, between Alma and Fairplay. It weighs 120 ounces and has a market value of \$2,000.
(Today's value is \$144,000)
- **March 4, 1897**
A Clear Creek miner recently discovered a ten dollar nugget of gold in the dirt on the roof of his cabin.
- **About one-fifth of all the gold held by the world's governments, worth about US\$248 billion, is stored beneath the streets of London.**

Gold Price USA
Oct. 24, 2018
\$1,223.06



The Prospector's Quill

VOLUME XLIII, ISSUE XI

NOVEMBER 2018

The Mystery of Genevieve...

by Steven Wade Veatch and Teresa L. Stoiber

The Mystery of Genevieve: The Golden Dinosaur from the Depths of the London Mine

By Steven Wade Veatch and
Teresa L. Stoiber

The legend of "Genevieve," a fossilized dinosaur not only made of stone—but also of gold—began on July 3, 1932. That was the day W. K. Jewett, owner of the London Mine near Alma, Colorado, stopped at the Antlers Hotel in Colorado Springs and made the official announcement of its unearthing. The story was picked up by the news services, and word of the fantastic fossil find spread through the scientific world like a prairie fire.

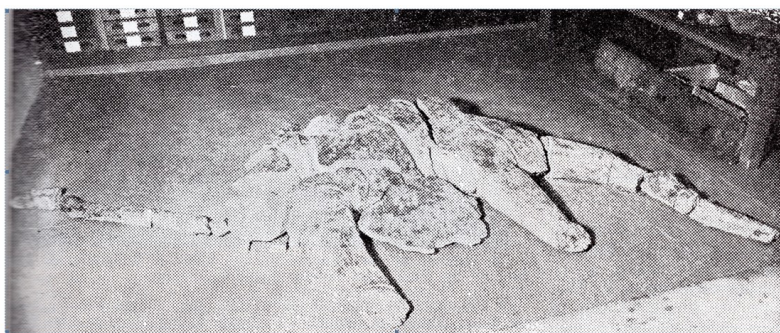
The golden dinosaur was discovered by William White 700 feet underground—deep in the London Mine. Curiously, the miners had been using the creature's nose as a lamp holder, not realizing there was a dinosaur there. White, a hard rock miner, believed at first he was looking at two stumps. In reality, it was a dinosaur lying on its back with its limbs at an angle of 75 degrees.

Eager to retrieve the dinosaur from its rocky tomb, miners blasted it out of rock at the 700-foot level of the London Mine with dynamite. The blast shattered the specimen. Bits and pieces of the dinosaur were hoisted to the surface of the mine where curious crowds gathered to see the prehistoric monster.

As the story goes, a geology professor at Colorado College, Robert Landon, traveled to Alma so he could examine Genevieve, an extraordinary record of a former world. The measurements he made revealed that the animal was 18 feet long and 6.5 feet high. A long neck supported a small head. The creature had a long tail.

Jewett, who gave to the city of Colorado Springs the Patty Jewett golf course, presented the dinosaur to the Colorado College museum. The 16-ton dinosaur reached Colorado College by truck where a crew of men carefully carried it to the basement of Cutler Hall. College technicians spent countless hours in the base-

(Continued on page 6)



The only known photo of Genevieve taken in the basement of Cutler Hall, Colorado College. Photo credit: *Colorado College Tiger*, August 12, 1932. Page 3. Courtesy of Colorado College Tutt Library, Special Collections.

silent AUCTION

This months General Membership Meeting will include a silent auction.

It is open to all that wish to participate. You are welcome to bid on and/or sell prospecting items.

All the bids are written down on paper and when the time is up, the highest bid wins.

Think of the auction as a prospecting yard sale except the bids are written down. There's no charge for space to display your items for auction. GPOC may include books or other items of interest.

Financial aspects are between the seller and the winning bidder, with the exception of auctioned items that have been donated to the club.

ELECTION RESULTS

GPOC Elects Board Members for 2019

During the October General Membership Meeting, the GPOC members voted in the 2019 board. Nominations were opened during September meeting and continued up to the October elections.

Each year, the GPOC elections are managed by the GPOC Trustees. This year, Paul Burns, Calvin Johnson, and Joe Manning orchestrated the voting. Last minute nominations were accepted for; President, Vice President, Treasurer, Secretary and 3-Year Trustee.

Please thank their tireless efforts to give the member of our club such a quality program.

Elected for 2019 Board:

President: Marty Allen
Vice President: Charles Engler
Treasurer: Wayne Wittkopp
Secretary: Jo Manning
3-Year Trustee: Joe Manning

Product Review

ICMJ's **PROSPECTING and MINING JOURNAL**

I was recently in Nathrop, Colorado at **The Rock Doc**, scanning their book and magazine rack for new and different items of interest. My eyes swept right passed the magazine section that held a copy of the **Prospecting and Mining Journal**. This may have been, because I do not picture myself as a miner, but more of a prospector.

I feel this lack of interest was because of the dominant portion of the magazine title (Mining Journal) or maybe the photograph on the front of the magazine. It was the picture of the gentleman holding a nugget in his hand. It was a nice looking nugget, but it was not realistic for the portion of the Arkansas River near Nathrop, CO.

While I was there, I was speaking with young lady behind the counter about how historically low the water was in the Arkansas River. After short conversation with this young lady, she mentioned one of the articles in the magazine and how it was relevant to the water being this low and how it might open up new panning spots along the Arkansas River.

This pointed our conversation to a particular article, "**Understanding Skim Bar Placers, by Chris Ralph**" (Sept. 2018, ICMJ's **Prospecting and Mining Journal**, page 11) and how it fit the conditions of the river.

Full disclosure... Being a journalist I would normally not do a product review on a magazine. The main reason why is, the average magazine leans extremely heavily to the advertising side of business. I realize that they need to make money to be able to print their magazine and bring us articles, with that being said, This one particular magazine seems to be an exception to my rule.

Chris Ralph is an associate editor for the magazine and he has a degree in Mining Engineering from the Mackey School of Mines in Reno, Nevada. The information that he is giving us within this article is from educational, experienced and practical knowledge point of view. His article has photos and drawings that help you understand the details. He speaks about the types of placer deposits, the size of gold you would expect to find and maps out general locations.

Because of the fineness of the gold in the Arkansas River this particular type of placer deposit (Skim Bar Placer) fits the small-scale prospector. Chris relays this information in a manner in which the educated prospector as well as the newbie can understand. The drawings confirm everything that he speaks about within the article.

"One of the most important things about skim placers as they are limited in the extent and erratic in value. The bulk of the gravel in the river as a whole are very low

in grade. It is only at the spots with the natural flow of water has concentrated the gold that the grades are good to excellent." by Chris Ralph.

If you do not have this **issue** you can give **The Rock Doc** a call **719-539-2019** and see if there are any issues left, and have them send one out to you.

The prospecting and mining Journal has been in print for 88 years and is extremely fair in price at \$3.75 per issue.

Prospecting and Mining Journal

Email: info@icmj.com

Phone: 1-831-479-1500

Website: www.icmj.com



Blast from the Past

Boulder Daily Camera, February 9, 1893

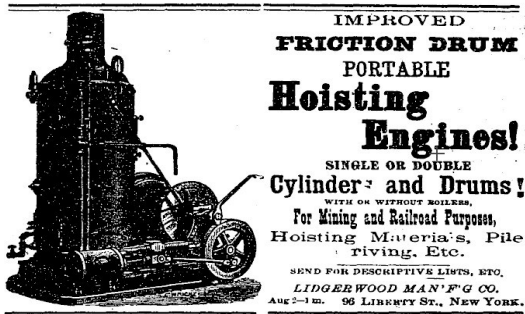
GOLD, PURE GOLD

Is what pours out of the Gold Nugget Mill.

Just now there is no property in Boulder County that shows a better record than the Gold Nugget. Superintendent Nials was seen at the Bowen & Co. last night and permitted a reporter of the Boulder Camera to feast his eyes upon about 5 pounds of gold retort, which is the savings of 36 hours at the Nugget Mill. This retort weighed more than the last 36 hours run, which was sold at the Denver Mint for \$863.89.

The gold is exceptionally pure being found 824 & 837 fine. Mr. Nials is naturally highly pleased over the showing made, knowing there is thousands of tons at the site and within the dumps, he can safely assure his company the "Gold Nugget" is all its name implies.

Boulder Daily Camera, February 9, 1893



Colorado Miner (Weekly), August 2, 1879

Beginners Corner

Gold Purity

24 Karat is 100% pure (1.000 Fine)
 18 Karat is 75% pure (.7500 Fine)
 14 Karat is 58% pure (.5883 Fine)
 12 Karat is 50% pure (.5000 Fine)
 10 Karat is 42% pure (.4167 Fine)
 8 Karat is 33% pure (.3323 Fine)
 U.S. Gold Coins are 22 K (.9166 Fine)
 Laboratory Pure Gold is 1.000 Fine
 Commercially Fine Gold is .999 Fine



Gold Conversions

The weight of gold is determined in the scale of troy ounces, rather than the avoirdupois (*pounds & ounces*) scale.

Their commonality is in grains: there are 480 grains in one troy ounce, 437.5 grains in one avoirdupois ounce.

Abbreviations: Pennyweight = dwt, ounce = oz., troy = t, and avoirdupois = av.

To convert avoirdupois ounces to troy ounces, multiply by .9114883.

1 oz. (t) = 20 dwt (Pennyweight), 31.1035 grams, 480 grains, 1.0971 oz. (av)

1 dwt = 1.55517 grams, 24 grains, 0.05486 oz. (av)

1 gram = .64301 dwt, 15.432 grains, 0.03215 oz. (t), 0.03527 oz. (av)

Christmas Party: December 12

Time: 7pm - 9pm

What to Bring: 2 side dishes to share

Toys for Tots: 1 unwrapped gift per person for Toys for Tots (2 gifts if the budget allows), ages 2-12



Money for White ticket sales for the chance to win one of two gold nugget prizes

Billy's Southern Pride Takeout & Catering will be providing Smoked Brisket, Smoked Turkey, Pulled Pork, Baked Beans, and Seasoned Green Beans. GPOC will be providing coffee, decaf coffee, lemonade, eating utensils, salt & pepper, and strip outlets for those that bring a crock pot.

Please make sure to label all dishes and serving utensils.

Borsch Brothers Mandolin/Guitar Duo will be providing musical entertainment for the evening.

Ideas for side dishes: Potatoes of any style, sweet potatoes of any style, bean casseroles, veggie casseroles of any style

Salads - green, fruit, pasta, potato

Crock pot dishes of any kind

Cheese/cracker, fruit, veggies trays

Rolls - looking for Hawaiian Sweet rolls for sandwiches

Desserts - homemade are awesome, but we are trying to keep desserts at a limit



We do need volunteers to set-up about 5:15-5:30p. We will especially need volunteers to clean up after... do not have to tear down tables & chairs.



GPOC Board & Committee Chairs

GPOC BOARD

President

Marty Allen

gpocPresident@gmail.com

Vice President

Charles Engler

gpocVicePresident@gmail.com

Secretary

Jo Manning

gpocSecretary@gmail.com

Treasurer

Wayne Wittkopp

gpocTreasurer@gmail.com

One Year Trustee

Joe Manning

gpocTrustee1yr@gmail.com

Two Year Trustee

Calvin Johnson

gpocTrustee2yr@gmail.com

Three Year Trustee

Paul Burns

gpocTrustee3yr@gmail.com

COMMITTEE CHAIRS

Membership

Elise Pearce

Membershipgpoc@gmail.com

Raffle

Wayne Wittkopp

gpocRaffle@gmail.com

Claims Committee

Bud Yoder

gpocClaims@gmail.com

Championship Committee

Dermot Haley

gpocChampionship@gmail.com

Speakers

Lou Espinosa

gpocSpeakers@gmail.com

Planning Committee

Del Hess II

gpocPlanning@gmail.com

The Quill Editor

Steve Cormier

gpocQuillEditor@gmail.com

Associate Quill Editor

Steven Veatch



The Gold Prospectors of Colorado (GPOC) was founded around 1974 as a non-profit organization for recreational gold prospectors in the Colorado area. Our membership at any given time has grown to over 600 members and continues to grow across the Front Range, the nation, and even the world!

GPOC Outings & Events Planner

In response to feedback from our members, we are adding a rolling three-month planning calendar to each issue of the Quill. Now you can see and plan for events months in advance—and make requests to the Planning Committee for outings and events in YOUR club! Also check the next page and the GPOC web site at WWW.GPOC.CLUB for more info on events including location and start times.

NOVEMBER 2018

The Prospector's Quill Calendar

Sun	Mon	Tue	Wed	Thu	Fri	Sat
Oct 28	Oct 29	Oct 30	Oct 3	1 GPOC Board Meeting	2	3
4 Daylight Savings Time	5	6	7	8 WMMI Rocky Mountain Coal Exhibit Lecture	9	10
11 Veterans Day	12	13 WMMI Speakers' Bureau Lecture	14 GPOC General Membership Silent Auction	15	16	17
18	19	20	21	22 Thanksgiving Day	23	24 WMMI Assay Class
25	26	27	28	29	30	Dec 1

DECEMBER 2018

The Prospector's Quill Calendar

Sun	Mon	Tue	Wed	Thu	Fri	Sat
2	3	4	5	6 GPOC Board Meeting	7	8 WMMI Rocky Mountain Coal Exhibit Closes
9	10	11	12 GPOC General Membership Christmas Party	13	14	15
16	17 WMMI Holiday Model Train Exhibit	18	19	20	21	22
23	24 <i>Christmas Eve</i>	25 <i>Christmas Day</i>	26	27	28	29
30	31	Jan 1, 2019 New Years Day	Jan 2	Jan 3	Jan 4	Jan 5

- **GPOC Board Meetings** are held the 1st Thursday of each month at **7 pm**, Gold Hill Police Station, 955 Moreno Avenue, Colorado Springs, CO, (access from W. Moreno Ave.). GPOC Members only.
- **GPOC General Membership meetings** are held the 2nd Wednesday of each month at **7 pm**, Elks Lodge, 3400 N. Nevada Ave, Colorado Springs, CO. The General Public is welcome!
- **GPOC Planning Committee Meeting.** **7 pm** at Village Inn, Garden of Gods. & 125, CO Springs. GPOC Members Only.
- **GPOC Claims Committee Meetings** are held at WMMI at **10am**, the last Saturday of the month. GPOC Members Only.
- **GPOC New Member Orientations** are held on Saturdays indicated at 10am @ WMMI. March and June are also followed by a GPOC Power Class—where you can study the GPOC Rules, Ethics, and Regulations—and earn discounts on Power Permits.
- **GPOC New Member Outings** are held the Sunday after New member Orientations. Meet @ 9am in the Cabela's parking lot, off the Ridgeway Parkway exit off I-25, south side of Denver

JANUARY 2019

The Prospector's Quill Calendar

Sun	Mon	Tue	Wed	Thu	Fri	Sat
Dec 30	Dec 31	1 New Years Day	2	3 GPOC Board Meeting	4	5
6	7	8	9 GPOC General Membership Meeting	10	11	12
13	14	15	16	17	18	19
20	21	22	23	24	25	26
27	28	29	30	Feb 1 GPOC Board Meeting	Feb 2	Feb 3



WMMI News

www.wmmi.org

Assay Seminar

November 24, 2018

Gold does not come out of the ground ready to wear. Join us to discover how ore is processed to extract gold.

RSVP to rsvp@wmmi.org
or 719-488-0880

225 North Gate Blvd.,
Colorado Springs, CO 80921
719.488.0880

Visiting Hours
9:00 a.m. - 4:00 p.m.,
Monday-Saturday Year Round

The Mystery of Genevieve...

(Continued from page 1)

ment where they enthusiastically cemented together what the newspapers hailed as the rarest find ever made in paleontology. After the repair of the fossil dinosaur, it was moved to Colorado College's museum and put on display.

There is a real mystery that surrounds this dinosaur. In the 1960s, the museum closed, and Genevieve's display was removed. No one seems to know what happened to this specimen. Was Genevieve smelted down, put in the basement archives and forgotten, or taken to a professor's house for a private collection? The mystery of her disappearance still stands to this day.

Two critical questions must now be answered: where did Genevieve go, and was she really made of "gold?" The past would not easily give up these secrets.

An article, from Greely, Colorado's Tribune-Republican, dated July 2, 1932, stated the dinosaur remains were made known to Mr. Jesse Figgins, Director of the Colorado Museum of Natural History (noted for his famous Folsom site work), who said this unusual dinosaur fossil must be the remains of a marine reptile. Nowhere in the article does it report Genevieve was made of gold—it does state that she was shattered when dynamited out of the mine, and that restoration wasn't expected to take long.

When asked about Genevieve, Colorado College archivist Jessy Randall said she'd been questioned about her before. The last time was in 2004, when Geology Professor Emeritus Bill Fischer was still alive. Fischer gave this response:

"The one man who would have had the answers, Professor Bob Landon, died in 1995, and all of the people associated with the college museum are also deceased. . . I never heard of the



The only known photo of Genevieve taken in the basement of Cutler Hall, Colorado College. Photo credit: *Colorado College Tiger*, August 12, 1932. Page 3. Courtesy of Colorado College Tutt Library, Special Collections.

specimen during my 50-year association with the school, and I suspect that it really was never installed in the museum and that the college newspaper account that 'it was resting on a pedestal in the museum' is totally false. From the photograph, one can see that with 16 tons of matrix and bone it would have taken months if not years to prepare the specimen for display. Now for a few thoughts as to the fossil itself. First of all, it is not a dinosaur and probably not a rhynchocephalian reptile. The photograph is of very poor quality, but my best guess is that it may have been a Phytosaur—but regardless of the correct identification it was a very valuable find, and I am sorry if it ended up in a smelter. . . Good luck in your search and sorry I couldn't be of more assistance". Signed: Bill Fischer

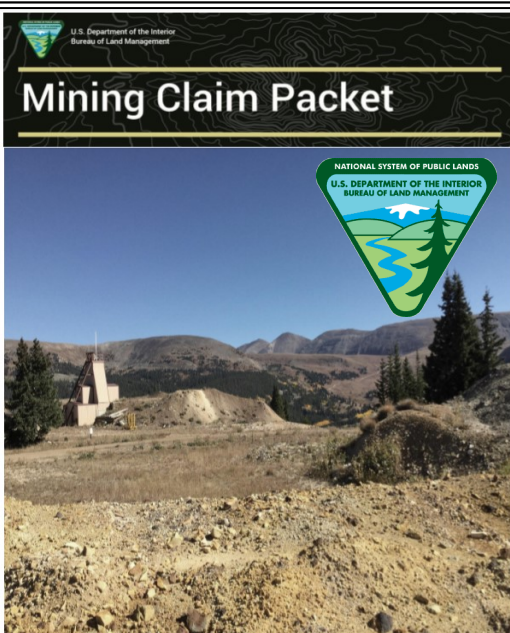
Sadly, it looks like Genevieve's case has gone cold. The museum has long been closed, and those associated with the museum are deceased. It is doubtful that she was made of gold—but she was found in a gold mine, the source of a good rumor and the basis for a great story surrounding her mysterious existence and disappearance.

Although Genevieve remains a mystery, this article has dug up and weaves together most of what is known and speculated about her. Although her real story has been buried with the museum workers and gold miners who have passed away, there are still a few miners who, while relaxing at a local saloon, fondly ponder the puzzle of Genevieve. They raise their shot glasses and make this toast to the miners who found Genevieve, the golden dinosaur: "May you always stand on ore and your labors be in vein."

Acknowledgments

The authors thank Danny Alfrey for bringing Genevieve to our attention back in 2011. We appreciate Ben Elick's help in obtaining the photograph of this mysterious fossil.

by Steven Wade Veatch and Teresa L. Stoiber



Updated BLM Mining Claim Packet

Revised September 10, 2018
4.8MB, pdf formatted, 91 pages

For a copy Click on the link below;

Mining Claim Packet

The above link will bring you directly to the BLM site to start the PDF Download.

WMMI Upcoming Event

December 18, 2017—January 27, 2018
Holiday Model Train Exhibit



The exhibit includes several types and sizes of model train layouts, some of which are kept running so both children and adults can see how they work. On display is a handmade metal train with a mining theme.

Visiting Hours
9:00 a.m. - 4:00 p.m.,
Monday-Saturday Year Round



GPOC Forum

Colorado's Premiere Gold Prospecting Club

Forum Post: **Metal Detecting**

Subject: **Prospecting gold ore with detectors**
by cjJohnson » Wed Jul 18, 2018 6:53 pm

Who can tell me why the first high-grade gold ore (Photo 1) isn't detected by my Garrett Pro-Pointer AT, but the second (Photo 2) is?

My Falcon pointer doesn't 'detect' either one. If you don't think the first one is "high grade," consider the shiny yellow stuff is crystalline GOLD WIRES !!!

I have an assay report on that 1st (Photo 1) 'Hot Rock', its 2281.7 troy ounces per ton at 93.881 (refined Au is 99.999)



Photo 1



Photo 2

I don't have an assay on the second 'hot rock', but I think it 'speaks for itself'!

What detector is best and why to find each? Who wants to try their detectors on these?

Been waiting a long time for the 'detectorists' in the club to add to this part of Forum - I am a novice!

cjJohnson

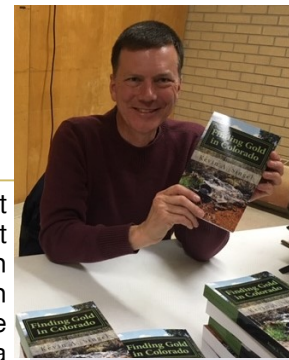
<https://www.gpoc.club/forum/index.php>

You are welcome to reply to this article by following the above link, and joining in on the conversation.

Past October Speaker

Finding Gold in Colorado

By Kevin Singel



Hopefully you did not miss this past October's general membership meeting. But if you did, you missed a great speaker, Kevin Singel, the author of "Finding Gold in Colorado." Kevin gave us about a 30 minute talk on history of gold in Colorado. It was a refreshing speech and had many interesting topics.

Before and after Kevin's talk, he made himself available for book signing.

[Facebook link to "Finding Gold in Colorado"](#)

You are welcome to reply to this article by following the above link, and joining in on the conversation.

Get Yer Gear! Short notes about the gear you wish you had after reading this. Seriously.

by Andrew C. Hawkins (April 2017)

We've all been there. We're cleaning up our cons from last week-end, maybe in the kitchen, maybe in the basement, maybe in the garage. As we see that beautiful yellor gold peeking out from behind our black or blonde sands in the pan, we grab a pipette or a sucker bottle and mop up those lovely flakes. Then what do we do? We put those flakes in vial ! But wait... all the plastic ones are full ! So grab a glass vial, just this once, to store our treasure. In goes the gold, back on the counter or shelf goes the vial ! On to the next pan. Next thing you know, you have more flakes of a different size mesh ready for deposit in that show and tell vial. You reach for the vial, with water and Jet Dry soaked hands and... bounce, bounce, CRASH! Vial does a nice pirouette and then bounces to the floor, smashing into 1,000 pieces and a week's worth of hard work sprays all over your floor and maybe even the stove.

YIKES! But... DON'T PANIC!

Here's what you do:

- 1) Breathe ! Very important. Most likely your instinct will be to gasp, hold breath, and this can lead to blackouts.
- 2) Grab a nice paper towel or two. I prefer Costco select a size, but others will do the job. Moisten those paper towels with tap water.
- 3) Get down on your hands and knees and wipe. Be careful ! Broken glass cuts fingers !
- 4) Let that paper towel dry in a gold pan (like an hour in Denver). Transfer to a metal pan and ignite (yes, burn) the paper towel. Do this outside (or under your range hood if it is a really good one). THIS IS WHY YOU NEED TO OWN AT LEAST ONE METAL PAN!
- 5) Burn completely to ash. Now, all that is left are minerals ! Really !
- 6) Add some water to the ash, a spritz or two of Jet Dry, and pan as you normally would.
- 7) Et voila! Recover your gold and this time, put in a plastic vial ! You may not recover 100%. But it's way better than leaving that gold on the floor !





VOLUME XLIII, ISSUE XI

The Prospector's Quill



Gold Prospectors of Colorado

PO Box 1593
Colorado Springs, Colorado 80901

Phone: 719-651-7930

E-mail: MembershipGPOC@gmail.com

Visit us on the web! <http://www.gpoc.club>

Prospecting Colorado since 1974.

THE ROCK DOC

AT PROSPECTORS VILLAGE

between Buena Vista and Salida

(719) 539-2019

Metal Detecting for Beginners

Come by the shop for all your metal detecting needs!
Visit our Facebook Page for more details on classes
or email me - cindy@therockdoc.net

The Rock Doc

17897 US Hwy. 285
Nathrop, Colorado 81236

Join our email list at "therockdoc.net"



Gold Prospectors of Colorado
PO Box 1593
Colorado Springs, Colorado 80901

