



NEWS NUGGETS

- Chaffee County has a confusing origin. Between February 8 and February 10, 1879, Carbonate County was created by the Colorado legislature out of northern Lake County. On February 10 the two counties were renamed, with the southern part of Lake County becoming Chaffee County, and Carbonate County becoming Lake County.
- Chaffee county is known as the "Heart of the Rockies".
- It was named for Jerome B. Chaffee, Colorado's first United States Senator.
- Through 1959 the county produced about 370,500 ounces of gold, mostly from lode deposits. Placers and base-metal ores yielded small quantities of gold.

INSIDE THIS ISSUE:

**GPOC Board & 2
Contact Info**

**GPOC 3-Month 2,
Planner 3**

**Cube Off! 1,
Round 2. 4,
5,
6**

The Roc Doc 7

**2017 Member 8
Survey**

The Prospector's Quill

VOLUME XLIII, ISSUE II

FEBRUARY 2017

Cube Off! Round Two

by Andrew C. Hawkins and Calvin Johnson

Several GPOC members joined to kick off the New Year at the Western Museum of Mining and Industry (WMMI) Saturday, January 7th, 10AM to 3PM for the WMMI Family Exploration Day – Geology.

GPOC volunteers conducted demonstrations of gold recovery equipment such as Blue Bowls, spiral wheels, Banjo Pans, and Gold Cubes

"Cube – Off Round 2" competing Gold Cube configurations to see which gets the most of that yellow GOLD was also an event highlight. This was a follow-on equipment test (with a little friendly competition) to the original Cube Off in January 2016.



"Cube it or Lose it" – GPOC members brought

gold bearing material to super concentrate with a volunteer's Gold Cube. Members bringing golden cons were requested to test pan their material. The Cube won't add gold to your "pay dirt" or turn mica and other "fools' gold" into the real stuff.

Ever dreamed of "Hitting the Mother Lode" or "Making the BIG Strike" and wondered what it would really look like in your pan? A volunteer member brought a sample of crushed ore containing wire gold that assayed at more than 1,000 ozt per ton!

Thanks to all who came out to kick off 2017!!! We had a trommel high banker (Ben), three Gold Cubes (Andrew, Calvin, David) including a Gold banker (David), a Genie spiral gold wheel (Calvin) and a borescope (Marty)!

In case you are wondering what a borescope has to do with prospecting or recovering gold, see the GPOC Forum for video clip from the borescope looking at the first "g-trap" in a gold cube!!! If you aren't familiar with a Gold Cube, this "g-trap separator" is part of the Gold Cube's patented design

to leverage the water flow and gravity to further separate more dense gold and other heavy metals from lighter blonde sands. The "g-trap" is between each tray, and before any of the vortex matting. We don't know of any other video taken that shows it in action. We have also attached a photo of the

top tray of one Gold Cube after the 1st run of the "Cube-Off" showing gold in the "g-trap" and on the matting that is downstream of it. The Cube isn't losing the gold you see go by the borescope in our online video (see GPOC Forum—members can register for FREE!), it gets caught in the vortex matting!

Since we forgot to bring a way of drying the recovered gold from the "Cube-Off Round 2" we did not immediately know the results until the January GPOC General Membership meeting, held

>>> continued on page 4

GPOC Board & Committee Chairs

GPOC BOARD

President

Marty Allen
gpocpresident@gmail.com

Vice President

Stan Gurley
gpocvicepresident@gmail.com

Secretary

Elise Pearce
gpocsecretary@gmail.com

Treasurer

Wayne Wittkopp
gpoctreasurer@gmail.com

One Year Trustee

Dick Margeson
gpoctrustee1yr@gmail.com

Two Year Trustee

Dr. Andrew C. Hawkins
gpoctrustee2yr@gmail.com

Three year Trustee

Calvin Johnson
gpoctrustee3yr@gmail.com

COMMITTEE CHAIRS

Memberships

Elise Pearce
membershpgpoc@gmail.com

Raffle

Wayne Wittkopp
gpocraffle@gmail.com

Claims Committee

Bud Yoder
gpocclaims@gmail.com

Championship Committee

Dermot Haley
gpocchampionship@gmail.com

The Quill

Editor

Dr. Andrew C. Hawkins
gpocquilleditor@gmail.com

Associate Editor

Steven Wade Veatch
gpocquilleditor@gmail.com



The Gold Prospectors of Colorado (GPOC) was founded around 1974 as a non-profit organization for recreational gold prospectors in the Colorado area.

Our membership at any given time has grown to over 600 members and continues to grow across the Front Range, the nation, and even the world!

♠ GPOC Outings & Events Planner ♠

In response to feedback from our members, we are adding a rolling three-month planning calendar to each issue of the Quill. Now you can see and plan for events months in advance—and make requests to the Planning Committee for outings and events in YOUR club! Also check the next page and the GPOC web site at www.gpoc.club for more info on events including location and start times.

FEBRUARY 2017 FOR THE LOVE OF YELLER GOLD!

Sun	Mon	Tue	Wed	Thu	Fri	Sat
			1	2 GPOC Board Meeting	3	4
5	6	7	8 GPOC Gen. Member Meeting	9 WMMI Exhibit: Minerals We Use Every Day	10	11
12	13	14	15	16	17	18 WMMI Publish! Workshop
19	20	21	22 GPOC Planning Comm.	23	24	25
26	27	28				

MARCH 2017

WE ALL WANT A POT OF GOLD!

Sun	Mon	Tue	Wed	Thu	Fri	Sat
			1	2 GPOC Board Meeting	3	4
5	6	7	8 GPOC Gen. Member Meeting	9	10	11
12	13	14	15	16	17	18 WMMI Family Day: Science
19	20 1st Day: SPRING	21	22 GPOC Planning Comm.	23	24	25 New Member Orientation
26 New Member Outing	27	28	29	30	31	

APRIL 2017

SEARCH THE EARTH EVERY DAY FOR THAT YELLER GOLD!

Sun	Mon	Tue	Wed	Thu	Fri	Sat
						1 POWER SEASON STARTS
2	3	4	5	6 GPOC Board Meeting	7	8
9	10	11	12 GPOC Gen. Member Meeting	13	14	15
16 Easter	17	18	19	20	21	22 Earth Day
23/30	24	25	26 GPOC Planning Comm.	27	28	29

- **GPOC** Board Meetings are held the 1st Thursday of each month at **7 pm**, Gold Hill Police Station, 955 Moreno Avenue, Colorado Springs, CO, (access from W. Moreno Ave.). GPOC Members only.
- **GPOC** Gen Membership meetings are held the 2nd Wednesday of each month at **7 pm**, Elks Lodge, 3400 N. Nevada Ave, Colorado Springs, CO. Public is welcome.
- **GPOC** Planning Committee Meeting. **7 pm** at Denny's on Academy Blvd. & I25, CO Springs. GPOC Members Only.
- **GPOC New Member Orientations** are held on Saturdays indicated at 10am @ WMMI. March and June are also followed by a GPOC Power Class—where you can study the GPOC Rules, Ethics, and Regulations—and earn discounts on Power Permits.
- **GPOC New Member Outings** are held the Sunday after New member Orientations. Meet @ 9am in the Cabella's parking lot, off the Ridgeway Parkway exit off I-25, south side of Denver

Cube Off! Round Two *continued*

>>> Page 1



A dream pan! Expertly panned wire gold from a crushed ore sample that assayed at over 2,000 ozt per ton!

on January 11th, but we did find out that Home Depot sand has some very fine gold in it! This is a prospector's urban legend—and the internet is peppered with stories of someone who once found some gold in sand purchased at a big box home improvement store. In our case—we found some very fine gold in our pans that the Gold Cube caught from the sand used in the Cube Off.

GPOC has at least one expert panner able to pan -100 mesh wire gold from a crushed sample of a vein that assayed 2281.7 oz/ton!!! No, we didn't ask Nancy what her commission rate is for her expert panning services.

Several folks at the WMMI event and in our Membership were interested in the Gold banker and we have seen a couple of different ones on the GPOC claims, but we hadn't watched a clean up or talked details like if they were running the standard 1100 GPH or optional 2000 GPH pump. The setup at WMMI was with a 1100 GPH pump and many thought there needed to be more water flow through the Goldbanker spray bar. Of note, the original Goldbanker put all the water through the spray bar while the newer ones have a connection from the spray bar to the

normal Cube tray inlet. My guess based on years of high banking is that a valve is needed to allow the operator to adjust water flows depending on the material being processed. I would caution anyone doing this that bilge pumps don't take kindly to back pressure so also put in a relief line. After the

January 11th weigh in by GPOC Treasurer

Wayne Wytchkopp on the official club scale—the results were in!

Andrew WON!!!

GPOC bags contained 1.00 grains each and we each ran 8 bags, so a total of 8.00 grains of gold was run by each. Results: Andrew with 4 stack 7.90 grains; Calvin with 3 stack 7.85 grains this means we will have to have a tie-breaker again next year!!!

What a great time! Andrew may have captured 0.05 more grains of gold...remember there are 480 grains in one Troy ounce...but after some calculations, Andrew would have to do that 568 more times at today's gold prices to make it worth the extra \$100 paid for the fourth tray! Worth it for Andrew—but a decision each member has to make for themselves when purchasing a cube. Thanks to all who came out to the WMMI and shared in the fun!

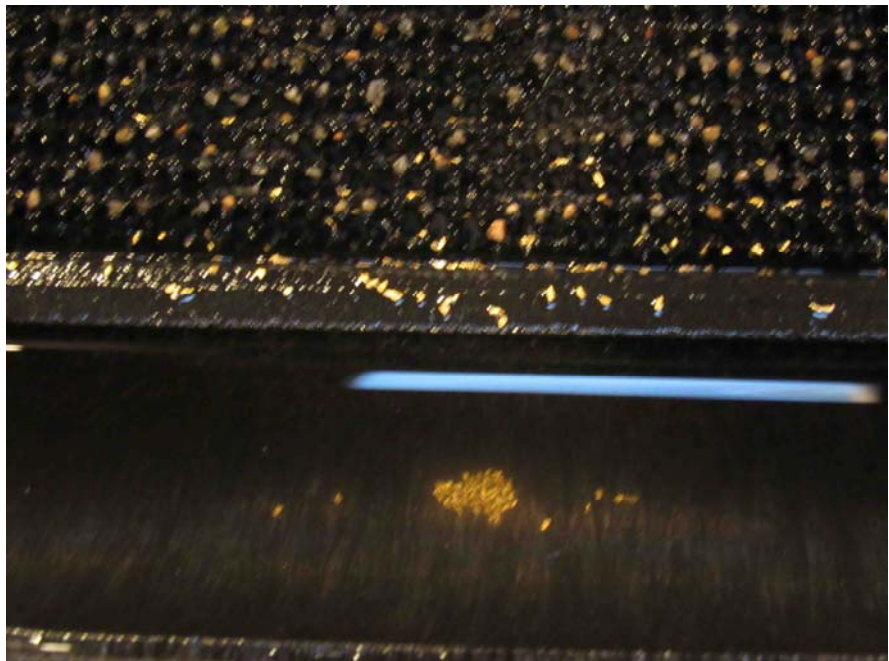


Photo of the gold caught in the G-force Separator of Calvin's cube after removing the top slick plate. GPOC President Marty Allen took a great video of the G-force in action—separating gold from blonde sands!

2017 Cube Off! Round Two—Photos



2017 Cube Off! Round Two—Photos





Gold Prospectors of Colorado

PO Box 1593

Colorado Springs, Colorado 80901

Phone: 719-651-7930

E-mail: Membership@gpoc.com

Prospecting Colorado since 1974.



Happy New Year!

*Thank you all for your friendship, patronage
and friendly smiles throughout the year.
We wish you blessed holidays with family and friends.*

*Did Santa bring you everything on your pro-
specting list? If not, come see us!*

The Rock Doc

at Prospectors Village



719.539.2019

between Buena Vista and Salida

Join our email list at "therockdoc.net"

SAVE THE DATE: NONFICTION WRITING CLASS @ WMMI

**Western Museum of Mining and Industry,
Colorado Springs, CO
February 18, 2017
10:00 am to 1:00 pm**

Learn how to write articles for the Gold Prospector's newsletter—Quill. Express what you know in a short article for the newsletter. This class will explore how to write about prospecting, gold, and mining. You will learn about obtaining photos to go with your articles.

Nonfiction is writing about the real world and appears in magazines, newspapers, books, blogs, websites. Today nonfiction is now more diverse and creative as it embraces many styles of writing. There are six major forms of creative nonfiction: memoir, personal essay, feature articles, profiles, reviews, and travel writing. Although this class will focus on crafting articles for the newsletter, we will briefly cover the other forms of creative nonfiction. These other forms are also appropriate for the club's newsletter.

This course also covers writing blogs and how to create one. Writing nonfiction is an excellent way for beginners and experienced writers to be published. This class will examine several strategies for publishing your work. This class is also open to members and the public, and is perfect for anyone who wants to improve their writing skills and learn more about nonfiction writing.

What you will learn:

- The creative mind and the writing life
- Finding a story
- Write great beginnings
- Launching the narrative arc
- Building dramatic sentences
- Cliffhangers and page turners
- The basic elements of writing nonfiction, including point of view, setting, and plot
- Developing characters
- The basics of interviewing and conducting research
- Tips to help you write in a clear and concise manner
- Obtaining photographs for your writing
- How to revise and polish your nonfiction writing
- Getting published

The course fee is \$35 for adults and \$7 for students (21 and under). Western Museum of Mining and Industry members receive \$5 off adult fee, and \$2 off the student fee. Call the museum for more details and to register: (719) 488-0880.

Teachers:

- Steven Wade Veatch: noted nonfiction author of Colorado mining history, earth science, and paleontology.
- Joshua Clark: emerging writer and explorer of the creative mind.



2017 Member Survey: What do you want from your club this year?

The GPOC Planning Committee would like to follow up from our January Member brainstorming at the General meeting—a great success and filled with ideas—to get more direct feedback from our Membership on outings and events for our Club! Simply print out this page and complete it—then return to the Club at an outing, meeting, or by mail.

Which mine would you most like to visit and tour?

Where would you most like to go prospecting with fellow club members (check all that apply)?

- | | | |
|--|---|---|
| <input type="checkbox"/> Clear Creek Canyon | <input type="checkbox"/> Cache Creek (Granite) | <input type="checkbox"/> Clear Creek (Adams County) |
| <input type="checkbox"/> Private Reserves | <input type="checkbox"/> Woody's | <input type="checkbox"/> Point Bar (Arkansas R.) |
| <input type="checkbox"/> Animas R. (public area) | <input type="checkbox"/> South Platte R. (Denver) | <input type="checkbox"/> Other _____ |

Would you enjoy a Spanish Monuments 101 Outing(circle one) YES! / No thanks. / What's that?

Would you enjoy another metal detecting outing? YES! / No thanks. / What's that?

